

NEWSLETTER

This Month

2023 Year in Review

MLAA Event Wrap-up

New PROTECTOR Series Mortice Locks



Security Tech Germany

ABUS SECURITY FOR THE OUTDOORS



LOVE IT?
LOCK IT

PRECISION
GERMAN
ENGINEERING



OUTDOOR PROTECTION

Warmer months mean more people are enjoying time outdoors, remember security doesn't stop at the front door. Choose ABUS's extensive range of outdoor weather resistant padlocks. Ideal for locking boats, bikes, trailers, gates & more.

With highly corrosive resistant internal components and state of the art plating, makes these padlocks ideal for securing items exposed to the weather.

ABUS is your answer for outdoor locking applications.

PARTCODES

- | | |
|-----------------|----------------|
| A. 83WP53NKD | D. 83MAR45NKD |
| B. 83WP63HB63NC | E. 83MAR45NWCC |
| C. 83WPCS53NKD | F. 83WPIB53NKD |

visit lsc.com.au to see ABUS outdoor padlocks complete range!

Merry Christmas

When we were younger, everyone said the world sped up as you got older. As a school kid, Christmas holidays seemed to go on forever (maybe they did then) – but the fact they'll be upon us in what feels like a blink of an eye makes me ask 'where did the year go'? It's been another busy year for our industry, and at LSC.

It's tempting to watch the news and feel nervous about troubles in many parts of the world. While I don't suggest switching off, looking around I'm reminded of the stability and harmony we enjoy here. We are part of that – securing people's property, homes, businesses, vehicles and treasured possessions.

My grandfather started selling locks and keys, and key cutting machines, in Victoria St in North Melbourne in 1926. Offering security products, and assisting customers to provide a wide variety of security solutions to homes and businesses is in our DNA.

I sometimes think about what my grandfather would have thought of the evolution in mechanical solutions,

and the rise of electronics (keypads, electric strikes, surveillance, alarms, credentials, and smart, connected solutions). It makes me think of how far the world has moved, yet at the same time we still want the same basic thing - security.

We continue to invest in our people, our systems and our products to ensure you can easily access the very best the world can offer our industry. We reject products every single day – so you can be assured that the ones we offer are the best in their class.

I'm very excited about the ongoing viability and vibrancy of our industry. The opportunities to provide security feel endless, and never before could you enjoy such a wide range of solutions to suit every need.

Lastly, thank you for your ongoing support and custom. I wish you all the very best for Christmas and a Happy New Year.

- Mark Johnson

Holiday Trading Hours

MON 25 DEC	CLOSED	THU 28 DEC	OPEN	SUN 31 JAN	CLOSED
TUE 26 DEC	CLOSED	FRI 29 DEC	OPEN	MON 01 JAN	CLOSED
WED 27 DEC	OPEN	SAT 30 DEC	CLOSED	TUE 02 JAN	OPEN

ABYL

2023 | 4TH FINALIST

CONNER WHELAN

PRECISION LOCKSMITHS (VIC)



Please provide a short personal biography about yourself

I've always been very hands-on and have always had an interest in figuring out how things work.

My grandfather was a locksmith with API for a number of years and I've learnt a lot from him, so I went out and did my apprenticeship with Precision Locksmiths and I have followed in his footsteps.

What are some of the skills and abilities necessary for someone to succeed as a locksmith?

I find you need to be able to think on the fly; sometimes a problem requires a left-of-centre approach.

Besides lateral thinking, you also need a good balance of traditional locksmithing too. To be able to design and implement systems, problem solve a huge variety of locks, closers, access control systems, safes, etc.

And lastly, you also need great customer service skills. To be able to confidently walk into someone's home or business and ascertain their needs and provide a solution that meets or surpasses their expectations while being aligned with our company's goals and ethos.

What key issues do you think will affect the locksmith industry in the coming decade and how do you think these should be approached?

I'm concerned that there's already an abundance of dodgy locksmiths operating who are unqualified or unskilled. I feel that there needs to be a more stringent licensing system in Victoria like some of the other states have implemented.

Also, the shift to electronic integration of locking systems, the introduction of AI (already seen in some of the camera systems) and data security. We as locksmiths need to protect our data, our client's data and find methods of preventing potential breaches.

Tell us why you should be Australia's best young locksmith.

I can roll with the punches, I'm highly adaptable and have a very broad skillset. I enjoy the challenges I face every day and am interested to see what the future holds.

PRODUCT SPOTLIGHT

visit lsc.com.au to see Austral sliding door lock range!

AUSTRAL SLIDING DOOR LOCK

- Mortice deadlock for sliding security doors
- Unlatched by levers from either side
- Snib lockable from inside
- Key lockable from both sides
- Cylinder not included
- Interlocking pin resists the door from being lifted or forced
- Upgradable to triple lock
- Finishes in black, brown, primrose and white

ALSD7BLK



40
YEARS
OF
EXCELLENCE



A BETTER WAY TO CUT ABLOY PROTEC® KEYS

Options for cutting Abloy Protec® keys with an electronic machine have been limited – until now. Silca have released the V6F clamp for Unocode F-Series machines that allows Abloy Protec® keys to be cut automatically and easily.

- Automatically rotates the key
- Single knob system to secure the key
- Dedicated cutter to ensure cuts to tolerance
- Works with ProMaster8

SD7A7204ZB



BORG DIGITAL LOCK ECP

The BL4409MGPROECP is the ideal for those difficult to lock gates, storage areas and access points.

Manufactured to the highest standards using 316 stainless steel for internal components.

The Marine Grade Pro series has undergone extensive testing to ensure that the coding chamber is resistant to salt water corrosion.

BL4409MGPROECP

Now with on-door Easi-Code
Pro code changing!



NEW SILCA AUTOMOTIVE KEY RANGE



NEW ADDITIONS



suit Audi

Silca Remote Auto 3 Button with Flip Blade HU66 & HU162 ID88
SHUAR22



suit Holden

Silca Remote Auto 3 button
SOPR39



AD SMART Pro Mercedes Kit (including Programmer + 3 Keys)
SD755333ZB



AD SMART Pro Mercedes All Keys Lost Cable Kit ADC2600
SD756298AD

BIG RANGE OF OEM RESIDENTIAL REMOTES

LSC stocks popular OEM remotes from the biggest brands like Merlin, B & D, Gliderol, Boss and ATA. OEM remotes are preferred by consumers for their quality, conformance with the original look and feel, and ease of programming using the original manufacturers methods and instructions.

With the holidays coming upon us and customers needing spare remotes for the holiday house, or to let friends and relatives access the garage, make sure you're stocked up.



Check out our range in branch, online, or ask your Account Manager.



Merlin Garage Door Remote with 4 Buttons - E970M
RH1080



ATA Triocode Garage Door Remote with 4 Buttons - PTX6 61228
RH2006



Gliderol Garage Door Remote with 3 Buttons - TM390 RCG40
RH4002



NEW

WORLD FIRST CLONING SOLUTION

Advanced Diagnostics **OBD SNOOP ID88 Device ADA2101**

- World first ID88 cloning solution
- Compatible with Volkswagen Audi Group 2012+
- Easy to follow process
- Auto detects vehicle when connected to OBD
- Bluetooth enabled
- Used in conjunction with RW5 or SMART Aerial Plus
- Volkswagen Audi Group ID88 cloning requires SC110026 GTI Ultra transponder
- Refer to CarLab for applications list



SD856911AD



SC110026

LATEST UPDATE FOR RW5 & SA+ NOW AVAILABLE

One of the great new features of the Silca RW5 and SMART Aerial Plus machines is the automatic download of new software updates. Being Cloud Connected, the devices are always kept up to date – making sure you can access the latest features and improvements automatically.

Version 1.0.803 was released this month and it enhances various functionality and improves support for some older chip types. New messages guide the use of the snoop to improve operation Enhanced battery management, T50 cloning and generation, and improved support for ID33, ID11, ID49-1C and ID40 are all included.



SD844048ZB



SD854589AD

Get yourself the best all round, cloud powered and constantly updated transponder cloners on the market – talk to your Account Manager today.



2023 YEAR IN REVIEW

JAN

LSC Head Office
VIC facelift



MAR

STU hitting
the road

JAAOTY winners
tour ABUS & SILCA

Milesight VMS



FEB

Website 25 Year
Anniversary

ABYL winners visit
to Melbourne

LSC SA Branch
relocates



MAY

LSC tours Australia with
the SecTech Roadshows

NZ website launch



Yale Unity

APR

AUG

LSC exhibits at the Security Expo

New QLD Branch Experience Centre opens

LSC appointed Power Shield distributor



OCT

MSA charity efforts (Melb Marathon)

MLAA Conference & JAAOTY winner

ABUS wall anchor



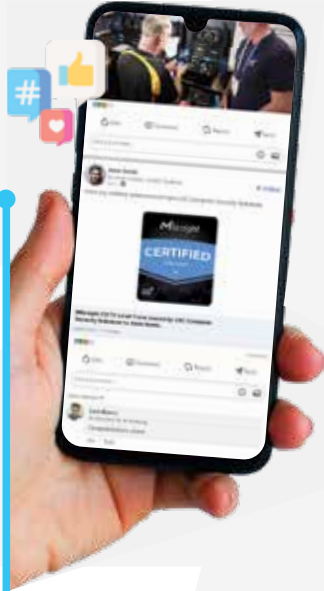
SEP

RISCO
RisControl



JUN

SALTO
Neoxx G3



LSC introduces Credly digital badges

JUL

BRAVA MATT BLACK LOCKS



locking for life



BRAVA Matt Black range of cylinders and locks, just the thing to upgrade your customers with style & quality, choose BRAVA matt black today.

DID YOU KNOW?

Matt Black is now the third most popular finish on the market, behind Satin Chrome and Stainless Steel



BRAVA Urban Double Cylinder Deadbolt
D3X92B



BRAVA Urban Entrance Leverset
LEX900B



BRAVA Cylinder Rim 2001 (Boxed)
BRU20016BLKDD



BRAVA Metro Oval Cylinder
5070XBLKDD



BRAVA Urban Double Euro Cylinder
31705PHEBLK

ADI HEAVY DUTY LOCKS

The range of ADI Lock Bolt & Blocklocks needs no introduction to locksmiths and security installers alike, as they will already be more than familiar with the quality, strength and ease of installation of this great range of products. Suitable for securing shop fronts, warehouses, hotels, community recreation areas, storage facilities and garages.



ADI Lock Bolt 5004
Satin Chrome
44142000



ADI Lock Bolt Slimline SL5
Satin Chrome
44143000



ADI BLOCKLOK 444
Single, Satin Chrome
44142030



ADI BLOCKLOK 444DD
Double, Satin Chrome
44142040



ADI BLOCKLOK 444DDFM
Double Front Mount, Satin Chrome
44142045

PROTECTOR EURO MORTICE LOCKS

PROTECTOR SERIES

AVAILABLE NOW

PROTECTOR Locks range of Euro mortice locks have always been recognised by Locksmiths and the Security industry for their quality & reliability. LSC have been supplying PROTECTOR Locks for decades and Locksmith love the fact they *"have never changed and always been reliable"*. With numerous models to select from with multiple backsets and finishes, its no wonder Locksmiths choose PROTECTOR Locks.

European Manufactured



PROTECTOR Heavy Duty Euro Style Sash Lock with 58mm Backset SS
PR74858SS

PROTECTOR 748 SERIES

- 45mm or 58mm backset
- Heavy duty steel case
- Key retracts latch
- Suits 32-40mm doors
- Retrofits most lever locks locks such as Yale, Union and Legge



PROTECTOR Heavy Duty Euro Style Sash Lock with 58mm Backset SB
PR74858SB



PROTECTOR Heavy Duty Euro Style Sash Lock with 45mm Backset SS
PR74845SS



PROTECTOR Heavy Duty Euro Style Sash Lock with 45mm Backset SB
PR74845SB



PROTECTOR Heavy Duty Euro Style Sash Lock with 60mm Backset SS
PR78560SS

PROTECTOR 785 SERIES

- 45mm or 60mm backset
- 8mm spindle hub
- Supplied less cylinder
- Supplied less escutcheons
- Double throw 21 mm deadbolt with anti-saw protection



PROTECTOR Heavy Duty Euro Style Sash Lock with 60mm Backset SB
PR78560SB



PROTECTOR Heavy Duty Euro Style Sash Lock with 45mm Backset SS
PR78545SS



PROTECTOR Heavy Duty Euro Style Sash Lock with 45mm Backset SB
PR78545SB



CREONE



Creone KeyBox System 9006S
B/Backup Audit Trail
CR1413211

Creone KeyBox System 9006E
Expansion Cabinet 6 Door Unit
CR141322



Smart solution for simpler needs.

The **Creone KeyBox System series** is a flexible and intelligent series of key cabinets featuring a keypad with an easy-to-read display and simple programming. The key cabinets are available in various models with 18, 32 or 216 key hooks or, alternatively, with 6 smaller compartments. Can be expanded with up to 15 expansion cabinets.

Total peace of mind at all times when you store your belongings or valuable equipment when connected to Creone's KeyWin6 web-based administration system; gives the right person secure storage of their belongings at all times, with the help of a laptop or tablet.



Creone KeyBox System 9001S
B/Backup Audit Trail
CR1413011



Creone KeyBox System 9002S
B/Backup Audit Trail
CR1413111



Creone KeyBox System 9500S
B/Backup Audit Trail
CR1413411



Creone KeyBox 9001E
Expansion Cabinet 29 Keys
CR141302



Creone KeyBox 9002E
Expansion Cabinet 16 Key Gap 2 Door
CR141312



CREONE Keybox 9500E
Expansion Cabinet
CR141333

Milesight



In a world of heightened concern around surveillance, Milesight is the safe and simple choice for CCTV installation.

Milesight produce a great range of NDA A Compliant cameras and NVR's, which do not use or deploy critical components including SoCs (System on Chips) produced by NDA A banned component vendors. These are recommended for enterprises and critical applications where compliance is essential.

There are huge commercial advantages to installing Milesight, its high-quality range is available to qualified installers only and cannot be purchased online by the general public.

Furthermore, Milesight cameras' vandal-proof metal casing provides superior protection to many competing plastic-encased brands. Most standard Milesight Cameras also feature a full suite of AI features.

SMART CCTV MADE SIMPLE

Installer's Choice

**MULTIPLE APPLICATIONS INCLUDING
BUSINESS & RESIDENTIAL**



Narrow To Wide Optical Zoom

**ENTRANCES, HALLWAYS,
DRIVEWAYS & MORE**



Comprehensive Overhead View

**SHOPPING, COMMERCIAL
TRACKING, BUSINESS**



National Conference & Trade Exhibition



Thanks to everyone who visited us up in Cairns for the MLAA National Conference & Trade Expo 2023!

Cairns was a popular destination as over 400 attendees packed into the Pullman International over the 2 days of the Conference. The biggest event on the locksmithing calendar didn't disappoint, the program included a great mix of business and skills sessions, a trade exhibition and the opportunity to network with old colleagues, friends and suppliers.

We congratulate Sam Ellison from John Barnes Locksmiths in Melbourne for winning the prestigious John Andrew Apprentice of the Year competition. Jointly sponsored by Silca, ABUS & LSC, Sam and his mentor, John Hassler, will receive an all-expenses paid trip to the Silca factory in Veneto, Italy & ABUS' factory in Wetter, Germany.





It was great to bring along so many of our friends from ABUS, Silca, SECURAM, SALTO Systems and WH Software. We certainly hope you enjoyed our Complete range of Security Solutions that we showcased across our stands, plus in our newest showbus - STU.

We'd also like to congratulate Steve Arias from SAS Locksmiths for winning the A.L. Chantry Memorial Award for the Pursuit of Excellence, as well as Michael McGovern from Independent Locksmiths, who was awarded with MLAA Life Membership.

This event is always a privilege to reconnect with so many friends and associates within the industry; thank you for making this event such an enjoyable one!



Ride the Tide

WITH **dormakaba**



HOW TO ENTER:

*Earn (1) entry for every \$500 (ex. GST) spent on dormakaba mortice locks & mortice lock kits between 1st November – 31st December, 2023. No limit to the amount of entries per customer.

WIN

A PADDLE BOARD!



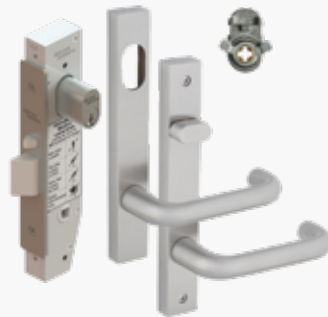
\$990 RRP

PRIZE INCLUDES: 1 X PADDLE BOARD, 1 X ADJUSTABLE CARBON PADDLE AND 1 X CARRY BAG

5 TO WIN*



SB2212 Double Cylinder Lock Kit DKSB2212KIT1



SB2212 Entrance Lock Kit DKSB2212KIT3



SB2212 Classroom Lock Kit DKSB2212KIT6

*For a full list of terms and conditions go to lsc.com.au/ride-the-tide-with-dormakaba

TERMS & CONDITIONS

Product features and pricing in this newsletter are subject to change without notice. Special promotional prices advertised here are for the month the newsletter has been published. However, some offers may commence on or extend beyond the promotional period. Most products have been photographed in-house and are identical to what you will receive. Information presented in this newsletter has been checked and is believed to be correct at the time of printing, however, errors and omissions may occur. LSC can not guarantee prices, specifications, or features of products that may change after printing.